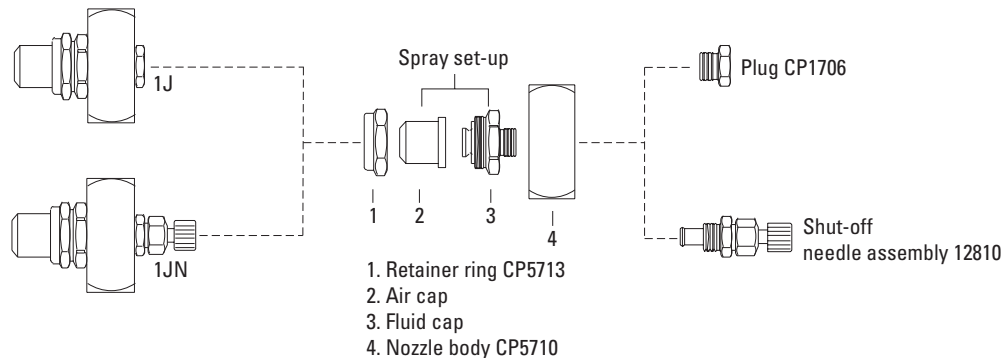
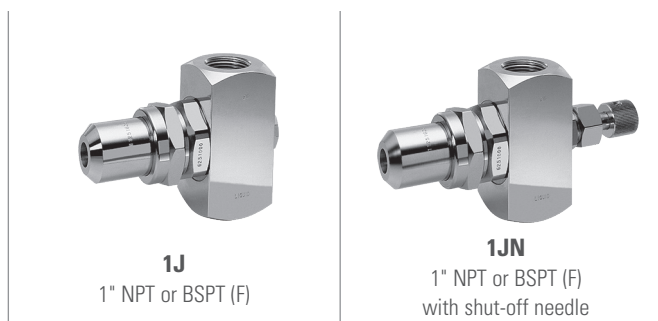


OVERVIEW – 1J SERIES AIR ATOMIZING



FEATURES AND BENEFITS

- Range in capacity from 24 to 1740 gph (91 to 6586 l/h)
- Available with a shut-off needle
- 1J features liquid and air feeds at opposite ends of the body and are provided with a removable plug so other needle assemblies may be added in the future
- 1JN features a manual shut-off needle that enables the flow of liquid to be stopped

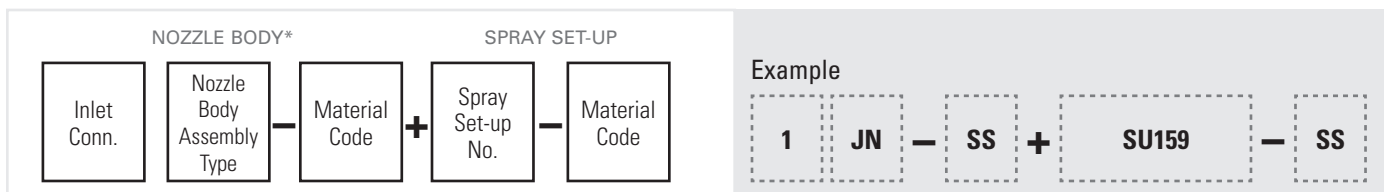


MATERIALS

Material	Material Code	Nozzle Type	
		J	JN
Nozzle Bodies			
Nickel-plated Brass	(none)	●	●
303 Stainless Steel	SS	●	●
Spray Set-Ups			
Nickel-plated Brass Air Cap and 303 Stainless Steel Fluid Cap	SSBR	●	●
303 Stainless Steel	SS	●	●

ORDERING INFO

COMPLETE NOZZLE ASSEMBLY



*Includes retainer and gasket.

BSPT connections require the addition of a "B" prior to the nozzle body inlet connection. To order Spray Set-Up only, use Spray Set-Up number (shown in performance charts) and material code: SU159 - SS. To order fluid cap only, use fluid cap number (shown in performance data charts) and material code: 4371000-SS. To order air cap only, use air cap number (shown in performance data charts) and material code: 1109-6-224-70-SS. To order spray nozzle without set-up, use inlet connection, nozzle body and material code: 1JN-SS.

