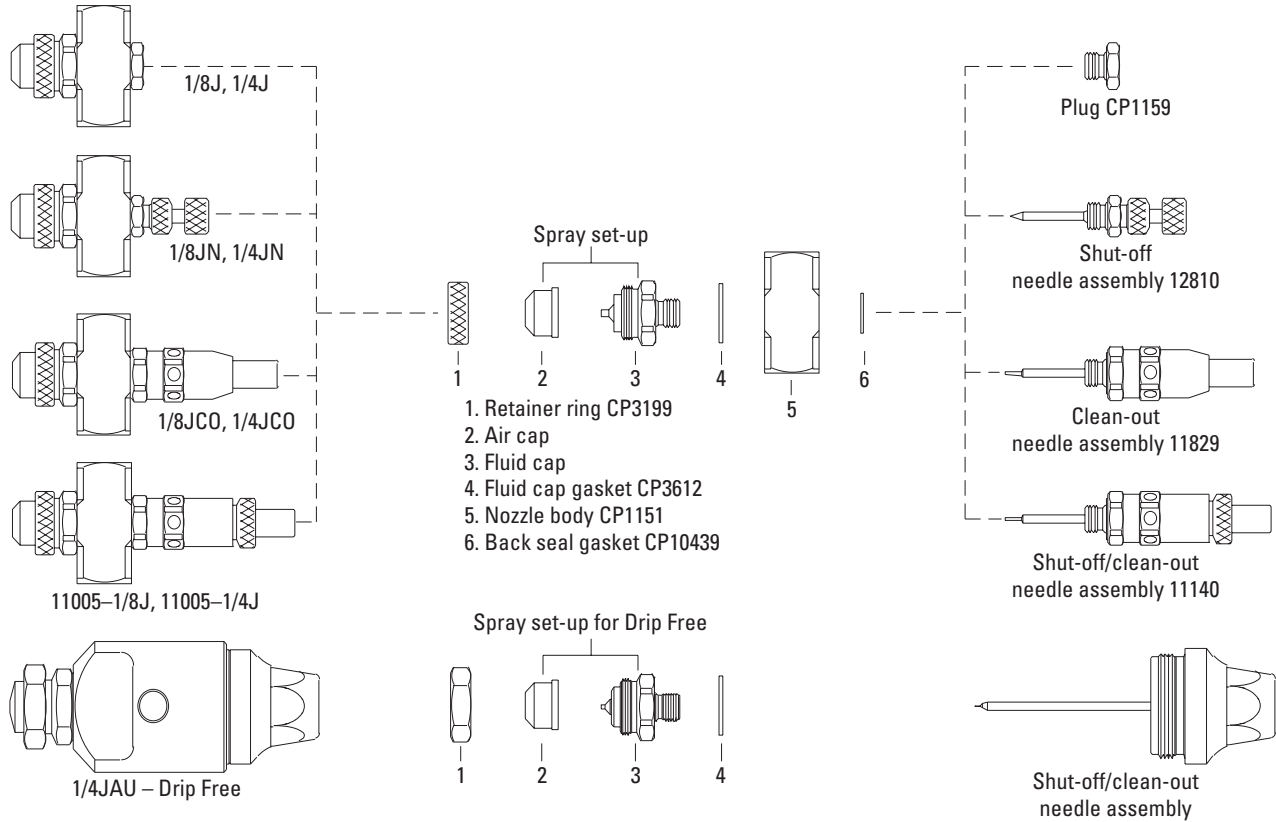


OVERVIEW – 1/8J AND 1/4J SERIES



FEATURES AND BENEFITS

- The basic J Series nozzle consists of a body and a spray set-up
- Various assemblies can be added to provide shut-off and clean-out functions
- 1/8J and 1/4J bodies have liquid and air feeds at opposite ends of the body
 - Bodies are provided with a removable plug so other needle assemblies may be added in the future
- JN features a manual shut-off needle that enables the flow of liquid to the nozzle to be stopped
- JCO features a clean-out needle that is activated manually
 - The needle slides through the liquid orifice to clear obstructions
 - Ideal for intermittent spraying applications when liquid can dry in the orifice between uses
- 11005 combines the features of JN and JCO offering a combination shut-off/clean-out needle



FEATURES AND BENEFITS

- 1/4JF features a built-in liquid strainer
- 1/4JFN features built-in liquid strainer and liquid shut-off needle
- JBC features the center lines of the air and liquid inlet entering in the back of the nozzle and parallel to the spray projection axis
- JAC features air and liquid inlet connections entering the nozzle at 90° to spray projection axis
- JACN features air and liquid inlet connections entering the nozzle at 90° to spray projection axis and a shut-off needle
- 1/8-2JAC dual spray assembly features two opposing spray set-ups with the air and liquid inlet connections perpendicular to the spray axis
- The 7545 multiple swivel spray assembly features each spray set-up mounted on its own swivel body
 - One or two bodies may be used and each can be rotated 360° to the desired position
 - Swivel bodies are locked in place by a stainless steel lock screw that runs vertical through the assembly
- 6552-1/8JAC miniature assembly body is only 1/2" (13 mm) thick with a 1-5/32" (29 mm) by 1-1/4" (32 mm) rectangular face
 - The tip of the nozzle projects from the face a maximum of 1-3/16" (30 mm) depending upon the spray set-up used
- 1/4JBCJ features a steam jacket around the nozzle body for spraying liquids that are too viscous to spray at room temperature



With Strainer
1/4JF and 1/4JFN
1/4" NPT or BSPT (F)
air inlet connection
1/8" NPT or BSPT (F)
liquid inlet connection



Back Connect
1/8JBC and 1/4JBC
1/8" or 1/4" NPT or BSPT (F)
inlet connection



Top Inlet
1/8JAC, 1/8JACN
1/4JAC, 1/4JACN
1/8" or 1/4" NPT or BSPT (F)
inlet connection



Top Inlet
1/8-2JAC
1/8" NPT or BSPT (F)
inlet connection



Swivel
7545
1/8" NPT or BSPT (F)
air and liquid inlet connection



Miniature
6552-1/8JAC
1/8" NPT or BSPT (F)
air and liquid inlet connection



Steam Jacket
1/4JBCJ
1/4" NPT or BSPT (F)
inlet/outlet connection

Contact your local sales engineer for more information.



PAWIN Engineering Co., Ltd.
168 อาคาร Axiom 1 น. 7 ถ. ซอยแจ้งวัฒนะ 10540
อ. บางพลี จ. สมุทรปราการ 10540



FEATURES AND BENEFITS

- 8650 multiple spray assembly (cluster type) features five spray set-ups located on the faces of the assembly or four set-ups located on the side faces
- 2J is a dual spray assembly with opposing spray set-ups perpendicular to opposing air and liquid inlets
- Thin wall adapters add an adapter locknut and gasket to CP3376 thick wall adapters to provide secure mounting in thin walls and include CP6378 locknut and CP2804-3 gasket
- Thick wall adapters replace retainer rings on nozzle assemblies and fit into threaded wall openings, holding the nozzle securely in place
- 1/4JDLN and 1/4JDLCO feature a screw mount with 9/32" (7 mm) diameter mounting holes
 - Standard 1/4" (6 mm) screws hold the body to the wall with a gasket providing the seal
 - The 1/4JDLN features a shut-off needle and the 1/4JDLCO features a clean-out needle
- 20470 Series hand-held air atomizing spray guns feature lightweight aluminum construction and a comfortable, easy-to-operate design
 - Extensions are available in up to 36" (91 cm) lengths



Cluster Type
8650
1/4" NPT or BSPT (F)
air and liquid inlet connection



Twin Spray
2J
1/4" NPT or BSPT (F)
inlet connection



Thin Walls
Available for 1/8J
and 1/4J assemblies



Thick Walls
1/8J and 1/4J with 3/4" NPT
or BSPT (M) adapter connection



Screw Mount
1/4" NPT or BSPT (F)
air and liquid inlet connection



20470
Hand-held spray gun
1/4" NPT or BSPT (F) inlet connection

Contact your local sales engineer for more information.



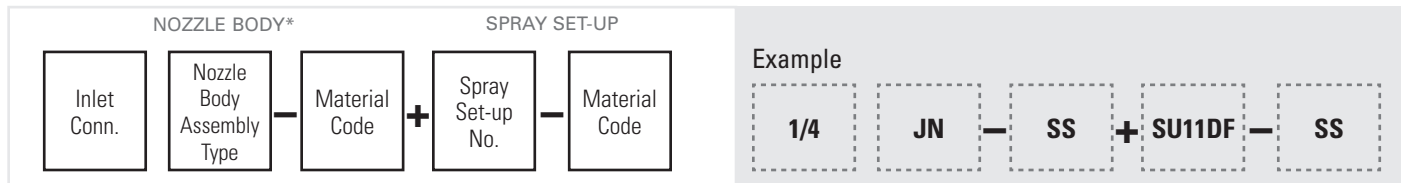
MATERIALS

| Material | Material Code | Nozzle Type | | | |
|---|---------------|-------------|----|-----|-------|
| | | J | JN | JCO | 11005 |
| Nozzle Bodies | | | | | |
| Electroless Nickel-plated Brass | (none) | ● | ● | ● | ● |
| 303 Stainless Steel | SS | ● | ● | ● | ● |
| Lucite®* | LUC | ● | | | |
| Spray Set-Ups | | | | | |
| Lucite* | LUC | ● | | | |
| Electroless Nickel-plated Brass Air Cap and 303 Stainless Steel Fluid Cap | SSBR | ● | ● | ● | ● |
| 303 Stainless Steel | SS | ● | ● | ● | ● |

*May not be available for all spray set-ups listed. Other materials available upon request.

ORDERING INFORMATION

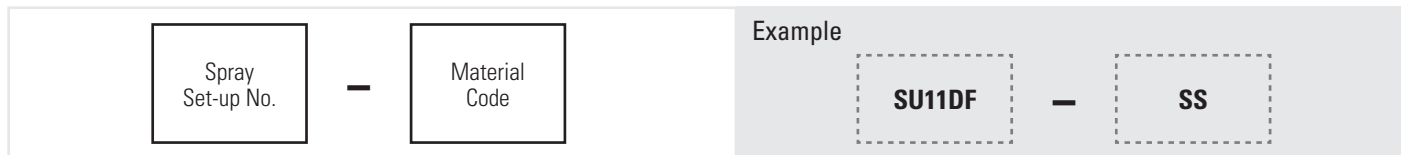
COMPLETE NOZZLE ASSEMBLY



*Includes retainer and gasket.

BSPT connections require the addition of a "B" prior to the nozzle body inlet connection. To order Spray Set-Up only, use Spray Set-Up number (shown in performance charts) and material code: SU11 - SS. Add DF to Set-Up number for Drip-Free Set-Ups: SU-11DF - SS. To order fluid cap only, use fluid cap number (shown in performance data charts) and material code: 2050-SS. To order air cap only, use air cap number (shown in performance data charts) and material code: 67147-SS. To order spray nozzle without set-up, use inlet connection, nozzle body and material code: 1/4JN-SS.

SPRAY SET-UP ONLY



To order spray set-up only, use spray set-up number and material code: SU11DF-SS.

