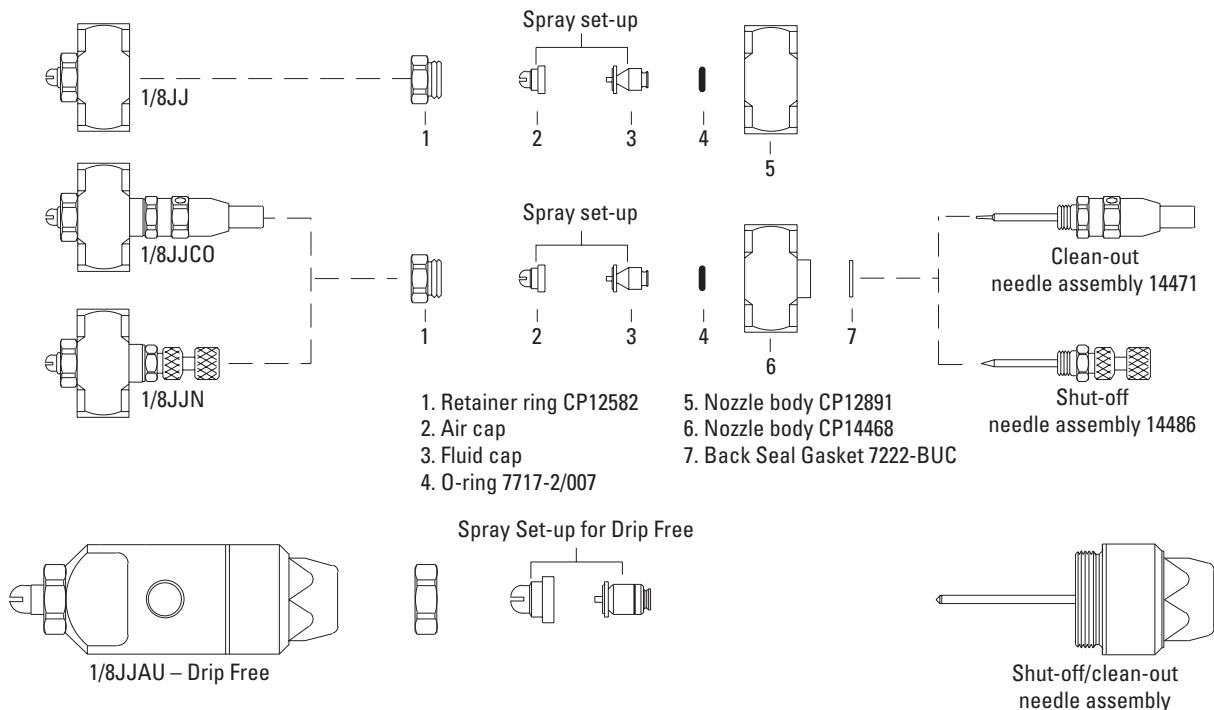
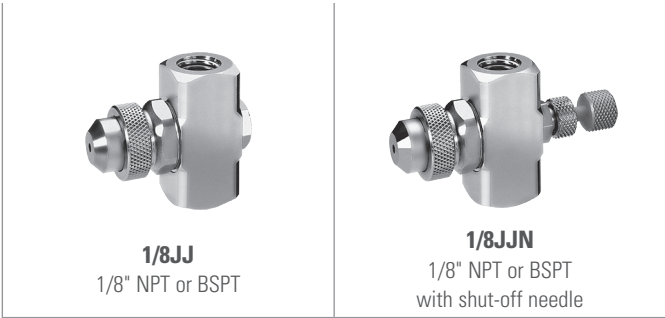


OVERVIEW – 1/8JJ COMPACT SERIES



FEATURES AND BENEFITS

- Nozzle assembly consists of a body and spray set-up
- Various assemblies can be added to provide shut-off or clean-out functions
- 1/8JJ has liquid and air feeds at opposite ends of the body
- 1/8JJN features a manual shut-off needle that enables the flow of liquid to be stopped
- 1/8JJCO features a clean-out needle that is activated manually
 - Needle slides through the liquid orifice to clear obstructions
 - Ideal for intermittent spraying applications when liquid can dry in the orifice between uses

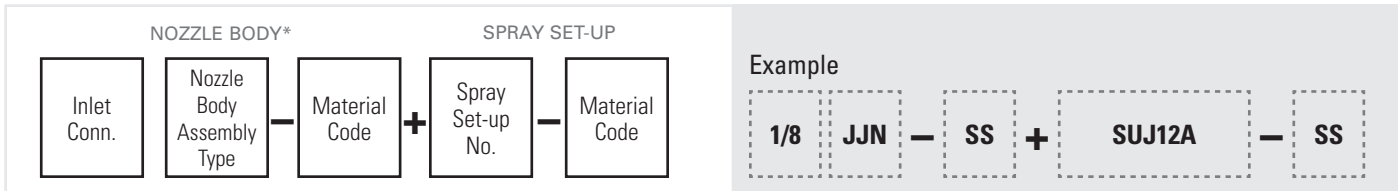


MATERIALS

Material	Material Code	Nozzle Type		
		JJ	JJN	JJCO
Nozzle Bodies				
Electroless Nickel-plated Brass	(none)	●	●	●
303 Stainless Steel	SS	●	●	●
Spray Set-Ups				
Electroless Nickel-plated Brass Air Cap and 303 Stainless Steel Fluid Cap	SSBR	●	●	●
303 Stainless Steel	SS	●	●	●

ORDERING INFO

COMPLETE NOZZLE ASSEMBLY



*Includes retainer and gasket.

BSPT connections require the addition of a "B" prior to the nozzle body inlet connection. To order Spray Set-Up only, use Spray Set-Up number (shown in performance charts) and material code: SUJ12A - SS. Add DF to Set-Up number for Drip-Free Set-Ups: SUJA12ADF. To order fluid cap only, use fluid cap number (shown in performance data charts) and material code: J2050-SS. To order air cap only, use air cap number (shown in performance data charts) and material code: J73160-SS. To order spray nozzle without set-up, use inlet connection, nozzle body and material code: 1/8JJN-SS.

